

# TITAN QUEST™



INSTRUCTION MANUAL

IRONLORE

THQ

## Avertissement sur l'épilepsie

Certaines personnes sont susceptibles de faire des crises d'épilepsie comportant, le cas échéant, des pertes de conscience à la vue, notamment, de certains types de stimulations lumineuses fortes; succession rapide d'images ou répétition de figures géométriques simples, d'éclairs ou d'explosions. Ces personnes s'exposent à des crises lorsqu'elles jouent à certains jeux vidéo comportant de telles stimulations, alors même qu'elles n'ont pas d'antécédent médical ou n'ont jamais été sujettes elles-mêmes à des crises d'épilepsie. Si vous-même ou un membre de votre famille avez déjà présenté des symptômes liés à l'épilepsie (crise ou perte de conscience) en présence de stimulations lumineuses, consultez votre médecin avant toute utilisation. Les parents se doivent également d'être particulièrement attentifs à leurs enfants lorsqu'ils jouent avec des jeux vidéo. Si vous-même ou votre enfant présentez un des symptômes suivants: vertige, troubles de la vision, contraction des yeux ou des muscles, troubles de l'orientation, mouvement involontaire ou convulsion, perte momentanée de conscience, il faut cesser immédiatement de jouer et consulter un médecin.

# TABLE OF CONTENTS

Installation .....	2
Game Options .....	2
Introduction .....	4
Getting Started .....	5
Game UI .....	8
Main Game HUD .....	8
Character Window .....	10
Skills Window .....	11
Quest Window .....	12
Merchant Window .....	13
Map Window .....	14
Party and Trade Windows .....	15
Combat .....	16
The Basic Attack .....	16
Advanced Combat .....	17
Loot: The Spoils of War .....	19
Matters of Life and Death .....	21
Hero Management .....	22
The Things You'll Carry .....	22
Learning and Growing .....	25
Pets .....	28
Skill Reallocation .....	28
Quests .....	29
Merchants .....	31
Maps and Travel .....	33
Equipment .....	35
The Basics .....	35
Superior Gear .....	37
Relics and Charms .....	38
Difficulty Levels .....	39
Multiplayer .....	40
<b>Démarrage rapide en français .....</b>	<b>42</b>
Contrat de licence utilisateur .....	45
<b>Nederlandstalige quickstart .....</b>	<b>48</b>
Gebruiksrechtovereenkomst .....	51
Game Credits .....	52
THQ Customer Services .....	56



# Installation

Installing Titan Quest is easy. Insert the install Titan Quest disc, and follow the instructions.

# Game Options

Select **Options** from the Main Menu or from the in-game Game Menu. The Options Menu has four tabs.

## Gameplay

**Show Monster Level:**

Display monster level in monster mouse-over box.

## Enable Optional Rollovers:

When checked, explanatory rollovers not essential to playing *Titan Quest* are disabled.

### Enable Quicksell (Right Mouse Button):

When checked, right-clicking will automatically sell items from your inventory when trading with a merchant.

### Enable Item Comparison:

When checked, compares mouse-over items in inventory or Merchant Window to current equipped item.

### Display Critical Damage:

When a critical hit is scored, shows critical amount as text over the target's head.

**Language Select:**

Select language for text displays.  
Requires game restart.



## Key Binding

This tab allows you to define the function of keyboard keys in Titan Quest. In the left column, each available function is listed. One or two different keys can be assigned to each function (for example, both C and I can be assigned to open the Character Window).

To change a key binding, select the primary or secondary binding with your mouse. Press the keyboard key, middle mouse-button, or scroll the mousewheel to set the key-binding. If the key or mouse function is already in use, you will be warned and asked if you want to continue.



*Note: The right and left mouse buttons cannot be assigned in key bindings.*

## Video

Your video settings should be automatically calibrated for your system specifications and optimal performance. To increase performance, try lowering your graphics options settings. For highest quality graphics, set options as high as your system's performance will allow. Use the **Default** button to return your video settings to the installation defaults.

If you are having trouble with your video settings, make sure you have installed the latest drivers for your graphics card and consult the Troubleshooting section at the end of this manual.

## An Important Note Regarding Graphics and Having the Best Possible Experience

*Titan Quest* uses some of the most advanced rendering techniques available today for special effects and to achieve real-time performance for a great game playing experience. The game was largely developed and tested on NVIDIA® GeForce™ FX, 6 Series, and 7 Series graphics cards and the intended experience can be more fully realized on NVIDIA GeForce 7 Series graphics hardware. On a GeForce 6800 or better you will be able to turn on all of the NVIDIA special effect features at higher resolutions in the game.



## Audio

### Master Volume:

Controls overall sound volume for *Titan Quest*

### Music Volume:

All game music

### SFX Volume:

Sound effects such as weapon noises, monster cries, spell effects, etc.

### Dialog Volume:

Volume for all dialog

### Ambient Music Control:

How often ambient music will play

Sound Blaster® X-Fi™ sound cards blur the line between gaming and reality. To truly experience audio beyond your imagination in *Titan Quest*, you must have one of the Sound Blaster® X-Fi™ series. So upgrade your PC audio to one of the Sound Blaster® X-Fi™ series for the most thrilling gaming audio ever. To learn more about Sound Blaster® X-Fi™ sound cards, please visit [www.soundblaster.com](http://www.soundblaster.com).

## Introduction

*IT IS SAID THAT WHEN TIME BEGAN* a great war was fought between the Titans and the gods. The struggle shook the earth and the heavens, mountains were leveled and oceans were made. Continents were broken in two. At last, the gods prevailed against their crude and savage masters, the Titans. And when they assumed lordship over all the world, they favored humankind, who had taken their side in the war. The Titans were gone from the earth, banished far from the light of sun or moon or stars...

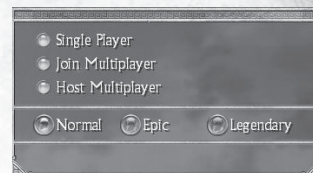
*IN ANCIENT GREECE*, in a quiet village, early in the day, all is far from peaceful - this forgotten corner of the great Greek civilization is about to taste its fill of chaos and destruction and horror. Things all but forgotten except in the colorful fancy of legend, glimpsed perhaps by shepherds in the thick of the woods - strange, terrible monsters and beasts - run like a rain-gorged lake over the fields and huts of the Greek people. Dusty, weary, a wanderer approaches this tiny village - a stranger fated to become their one, bright beacon of hope.

Welcome to *Titan Quest*....

## Getting Started

### Creating Your Hero

Welcome to *Titan Quest*. Once the game is installed and running, you are ready to begin. Select **Play Titan Quest** from the Main Menu. You should be prompted to create a new character.



At this point, you need only choose a name and gender - and if you like, the color of your tunic. Just what sort of hero you will become will be determined during your journey through the world of *Titan Quest*



At the start of your game, this is what your hero will look like:



When you're happy with your hero, press the **Create** button. He or she will appear standing on the pedestal on the screen. If you have more than one hero saved, the arrow buttons on the pedestal will cycle between them. For now, however, you are ready to go. Press **Start** - and you're off!

*Note: Your character name is how your hero will appear in game. If you play online (p.40), that is the name that other players will know you by.*

### Playing Titan Quest

There are only a few simple things you need to know to get started. In *Titan Quest*, you will play a single hero as you adventure through the ancient world. In your travels, you will meet other great heroes out of history and myth, but the journey at hand is yours alone. When the game starts, your character is a blank slate. What sort of hero you will become and what powers you come to master will be decided by you over the course of the epic tale that is *Titan Quest*.



## The Left Click - Your Greatest Weapon

Everything that you need to do can be done with your left mouse button:

- Left click on the ground and you'll go there.
- Left click on a monster and you'll attack it.
- Left click on loot, and you'll pick it up.
- Left click on a door or a chest and it will open.
- Left click on a person (called a Non-Player Character, or NPC) with an icon over their head, and they'll talk to you

Eventually, you may also want to use the right mouse button, and even your keyboard - but left-clicking alone will get you pretty far.

## The Cycle of Fun

As your hero travels through the lands of Titan Quest, you develop from a raw novice to the mightiest of warriors - one destined to change the course of history. A hero is defined by his or her deeds. In *Titan Quest*, the process of becoming that hero looks like this:


- Fighting monsters gets you *loot* and *experience*.
- Experience lets you graduate to new levels. Each level lets you enhance your *masteries* and *skills*.
- Improved *weapons*, *armor* and *skills* make you stronger, which lets you fight more powerful monsters.

And the cycle continues..

## More Help - Tutorial and Beyond

If you are not familiar with action role-playing games (action-RPGs), pay attention to the tutorial help as you begin to play. If you missed some tutorial help or wish to re-read some previous help, just use the left and right arrow buttons on the Tutorial Window to page through the help.

You can open and close the Tutorial Window using the Help button on the game UI (user interface).

 Tutorial Window  
Hotkey: **H**

Tutorial help can be disabled and re-enabled using the checkbox at the bottom of the tutorial window.





# Game UI

## Main Game HUD

### Character Portrait

Your current Health

Current level

Your current Energy  
(lets you use skills)

Monster Mouseover info:

- Monster Name
- Monster Type
- Monster health and energy

Current Location

Compass  
map

Party member shown off-map  
(in multiplayer)

Current location Map icons

Map icons. Mouse-over them  
to learn more

Pet

Buffs. All spells, enhancements,  
curses and other temporary  
alterations to your hero

Pet

Party members

This is you

### Skill Quickbar

Assigned skills. Shortcuts: **1 - 9, 0**  
Potions. Shortcut: **9, 0**

Party Window  
For multiplayer mode.  
Shortcut: **P**

Tutorial Help (p.7)  
Shortcut: **H**

Game Menu  
Shortcut: **G**

Chat Pane  
For multiplayer mode  
Shortcut: **T**

Map Window (p.14)  
Shortcut: **M**

Quest Window (p.12)  
Shortcut: **Q**

Skills Window (p.11)  
Shortcut: **S**

Character Window  
(p.10) Shortcut: **C, I**

Left-click attack

Right-click attack

Weapon quick-swap  
Shortcut: **W**

Portal Stone (p.34)

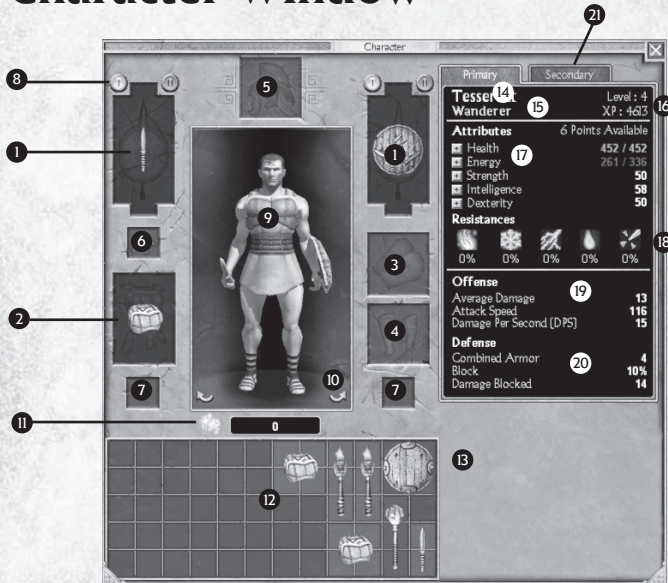
### Experience Bar

Shows your progress towards  
your next level (p.25)





# Character Window



## Equipped Items (p.35)

- 1 Left and right hand:  
Weapons and shields
- 2 Chest armor
- 3 Arms
- 4 Legs
- 5 Head
- 6 Necklace
- 7 Rings
- 8 Weapon swap:  
Switch between two weapon sets
- 9 Player Character:  
Portrait of your hero with  
current equipped items
- 10 Character rotation buttons

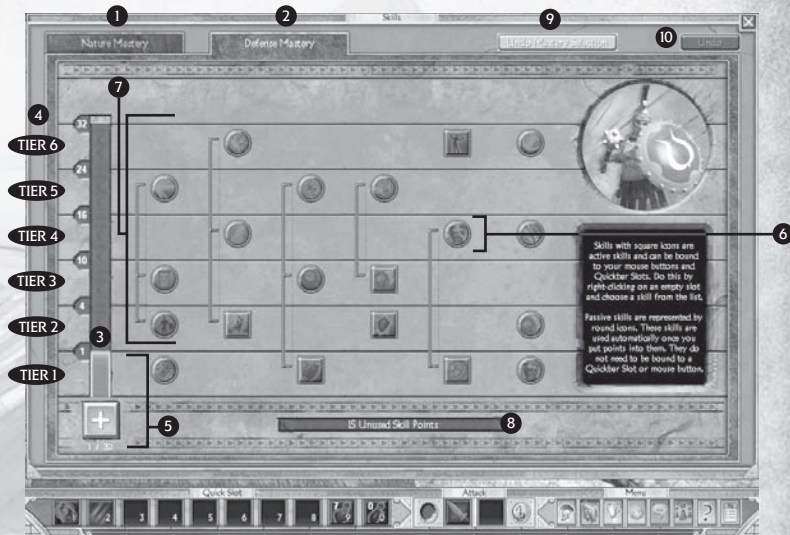
## Inventory

- 11 Gold
- 12 Main inventory
- 13 Extra packs (p.24)

## Character Stats

- 14 Name
- 15 Mastery title
- 16 Level: current experience (p.25).
- 17 Attributes (p.27)
- 18 Resistances  
Fire - Cold - Lightning -  
Poison - Pierce Damage
- 19 Offensive stats
- 20 Defensive stats
- 21 Secondary stats

# Skills Window



## 1 First Mastery

## 2 Second mastery (p.25)

### Mastery Level (p.26)

- 3 Mastery points invested
- 4 Mastery Tiers  
Skills in this tier can only  
be used when unlocked  
by the Mastery level

### Skills (p.26)

- 5 Available skill tiers. Mastery points  
invested out of total possible
- 6 Modifier skills (p.26)
- 7 Unavailable skills

## 8 Available skill points

Can be allocated to mastery  
level or to available skills

## 9 Undo Mastery Selection

Change your mind before  
assigning any skill points.  
Once points are assigned,  
Mastery cannot be undone.

## 10 Undo

Reset chosen skill points.  
Skill assignment can be  
reverted until window is closed

*Note: Closing the Skill Window  
accepts changes. You cannot undo  
after closing the window.*



# Quest Window



## Main Quest tab (p.29)

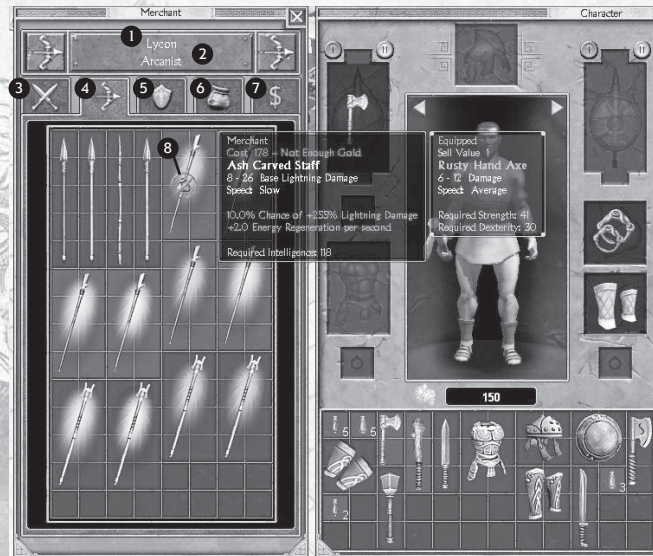
- 1 Quest map
- 2 Region (Greece, etc.)
- 3 Active Quest
- 4 Summary tab
- 5 Quest Title
- 6 Quest Summary
- 7 Quest Objectives
- 8 Dialog tab. Hear quest assignment dialog.

# Merchant Window



## Side Quest tab

- 1 Side quests are shown on this tab (p.30)
- 2 Region
- 3 Location
- 4 Side quest title
- 5 Side quest description

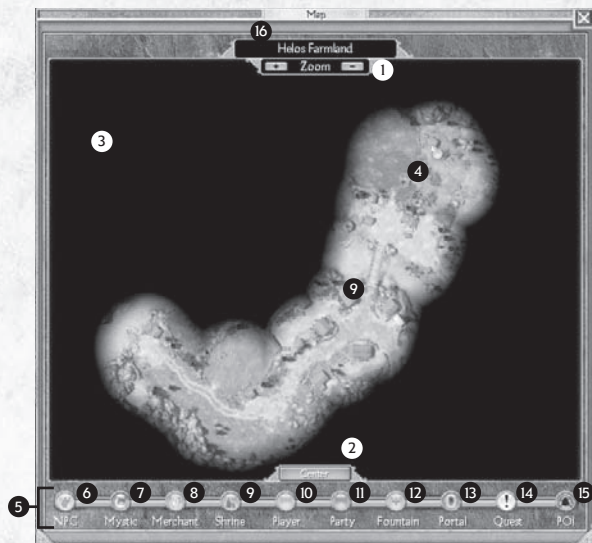


## Merchant Window

- 1 Merchant Name
- 2 Merchant Type (p.31)
- 3 First weapon tab
- 4 Second weapon tab
- 5 Armor
- 6 Potions & Jewelry
- 7 Sell-back tab
- 8 Not enough gold mouse icon



## Map Window

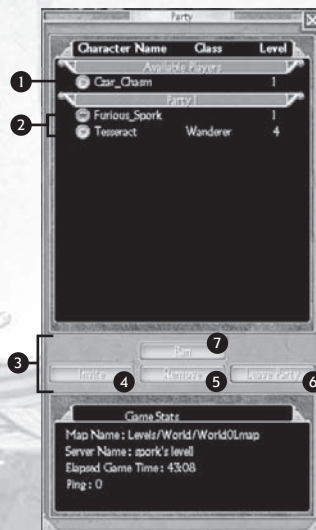


### Current Location

- 1 Zoom buttons. Also use mousewheel
- 2 Center map button. Shortcut: **NumKey 0**
- 3 Fog of War
- 4 Previously explored area (in previous game sessions)
- 5 Map Legend
- 6 NPCs. Speaking people
- 7 Mystics. Skill point reallocation
- 8 Merchant.
- 9 Shrines
- 10 Player Character
- 11 Party. In multiplayer, members of your party.
- 12 Rebirth Fountains
- 13 Portals
- 14 Quest. Quest items and objectives
- 15 POI. Points of Interest
- 16 Current Location

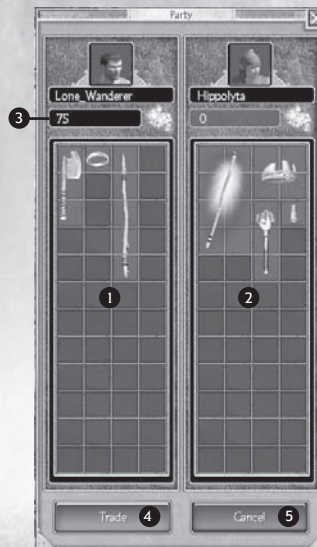
For more on the Map Window see p.34.

## Party and Trade Windows



### Party Window

- 1 Other players in the current game.
- 2 Party members
- 3 Party buttons
- 4 Invite. Join up with others
- 5 Remove. Kick somebody out of your party (party leader only)
- 6 Leave. Leave someone else's party
- 7 Ban. Kick player out of the game session and prevent them from returning (game host only)



### Trade Window

- 1 Your trade offering
- 2 Their trade offering
- 3 Gold offered
- 4 Trade button. Both players must press for transaction.
- 5 Cancel button. Items 'on the table' are not lost if you cancel.



# Combat

In *Titan Quest*, no matter whether you wield a spear or hurl fireballs, you are a warrior - and fighting is what you do. You will find all kinds of strange, mythical monsters wandering the world of *Titan Quest*, and every single one is looking for a fight. You would do well to be prepared.

## The Basic Attack

The easiest way to attack a monster is by left-clicking on it. You'll use whatever weapon you have in your hands - and if you're not holding anything, you'll use your fists!

Weapons can be divided into two basic categories: melee and ranged. An example of a melee weapon is a sword or a spear, used to strike at close distance. A ranged weapon, such as a bow or a magical staff, fires at monsters from afar. Left clicking on a monster will perform either type of attack, depending on what's in your hands. It's that simple.

Click and hold the mouse button to attack repeatedly until your foe is dead. This is especially useful for tougher monsters, who won't fall in one or two blows.

If you hold down the **Shift** key and click on an enemy, you will attack without moving. This can be handy for firing arrows at a moving target... or for just admiring your prowess with a blade!

- Left click: Attack using your equipped weapon
- Left click and hold: Attack and keep attacking until monster is defeated
- Shift-left click: Attack standing still (don't run towards enemy)



# Advanced Combat

## Choose Your Skills

Swinging a sword is a good start, but as monsters get harder, you'll need some more tricks up your sleeve. You have no skills when you first create a character in *Titan Quest*. As you gain levels of experience and choose a Mastery (p.26), you will gain skills that give you more powerful attacks. You can assign these skills to the right mouse button and to the skill Quickbar (and in some cases, the left mouse button, actually).

A skill attack can be anything from a lethal ice-bolt to a stunning shield-bash. Skill attacks use up your energy. When a skill costs more energy than you have, you won't be able to use it. You'll have to wait until your energy regenerates, or drink a potion. Some skill attacks also have a cool-down time, and cannot be used again until they are ready.

Over the course of the game, you will acquire more than one attack skill. You will also gain skills that are used for other things than attacking, such as summoning pets or enchanting your weapons. After assigning a primary skill to your right mouse button, you will probably want to assign the others to the skill Quickbar. The Quickbar has a total of ten slots. The last two default to health and energy potions, but they can be reassigned.



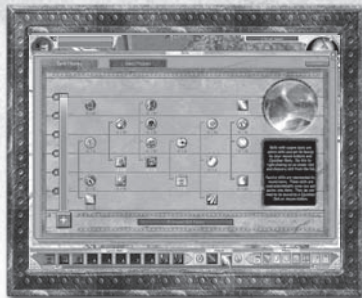
To assign a skill, simply right click on an attack or Quick Slot. Left click on a skill (or potion), and it will be assigned to that slot.

*Note: only some skills can be assigned to the left mouse button - the ones meant to be used as a primary attack.*



To use a skill from the Quickbar, either left click it on the bar, or press the number of the Quick Slot on your keyboard.

*Note on assigning skills to your left mouse button: for most attack skills, running out of energy will cause you to use your standard attack instead.*



## Choose Your Weapons

In *Titan Quest*, you can keep a second weapon set at the ready, and switch to it at any time - even in the middle of combat. To swap weapons, you must first equip a second set of weapons (see p.25). Once you have two sets equipped, simply press the swap button. (default shortcut key: **W**). Note that skills assigned to your mouse buttons are swapped along with your weapons.



## Tips

- Assign skills to mouse buttons and Quickbar
- To assign, right click a Quickslot and select skill
- Press number key (**1-9** and **0**) to use skills or potions in Quick slots
- Health and energy potions are assigned to **9** and **0** by default
- Swap weapon sets with swap button or **w** key

## Know Your Enemies

The monsters in *Titan Quest* can be fierce opponents. Not only will many attack you on sight, but many have skills of their own - so don't be surprised if you see an ice-bolt hurled at you!

When you've entered a new area, monsters may be new and possibly more deadly than those you've met before. You may find it worth your while to proceed cautiously and size a monster up before you take it on, especially if it's in a group. When you move your mouse over a monster, a box will appear at the top of the screen, which tells you the type of monster. Look carefully - you may have faced a satyr pawn, but have you faced a satyr guardian? When you have Monster Level enabled under Gameplay Options, you will also see a number next to the name, which is the monster's level. As a rule of thumb, if that number is much higher than your own - proceed with caution.

## Loot: The Spoils of War

Not only will some monsters use skills against you, but many will sport weapons and armor. In *Titan Quest*, any equipment your enemy has will become loot for the taking, once you have defeated them. No crow will ever drop a suit of armor, but you can always pick up and use the same axe that boar-man swung at you. This means that powerful weapons will often be won from dangerous foes.

When the battle's done, you'll see loot scattered across the ground. Hovering your mouse over an item will show you its name. To pick the item up, simply left click. The color of the mouse-over text tells you what sort of item it is and whether standard issue or rare and magical (see p.37). Sometimes your enemies' gear will break in the heat of the fight. When you find it on the ground, it will be close to useless. These items are shown in dark gray text.

Item type	Color
Broken Item	gray
Standard Item	white
Magical Item	yellow
Rare Item	green
Epic Item	blue
Legendary Item	purple
Relic or Charm (p.38)	orange
Potion	red
Gold	yellow



To make your post-combat treasure hunting a little easier, try holding down the **Alt** key. While the **Alt** key is pressed, the names of the visible items lying on the ground will appear (broken items are filtered out). Even better, you can pick an item up by clicking on its name, as well as on the item itself. You can also use **Z** to show loot, including broken equipment, and **X** to show only magical and rarer items.

- Click on loot or its name to pick it up
- Hold down **Alt** to show all non-broken loot
- Hold down **Z** to show all loot and **X** to show non-common loot
- Text color tells you class of item

You will often find a chest or stash of some kind amongst a group of monsters, where they have stored their own spoils of war. Click once on a chest to release its contents. The items will scatter on the ground, ready to be collected by the diligent adventurer.

*Note: You cannot attack monsters while holding down **Alt**, **X**, or **Z**. Fight first, gather later!*



## Matters of Life and Death

### Staying Alive

Even the greatest fighters end up with some nicks and scratches. Next to your character portrait, in the top left corner, are two bars. The red one is your health and the blue one is your energy.

Both slowly regenerate over time, but if you're in a hurry, you can use potions to fill them. Health potions (red), and energy potions (blue), come in different sizes that restore different amounts of health and energy. Take note: there is a short cool-down period after you drink a potion, before you can drink another.



To drink a health or energy potion, click on its Quick Slot (default is **9** for health and **0** for energy). You can also use the default hotkeys **R** for health potions and **E** for energy potions.



In your travels you may also find magical items which will increase your max health or energy, or speed up their natural regeneration rates. Increasing your intelligence attribute (see p.27) will also increase your energy regeneration.

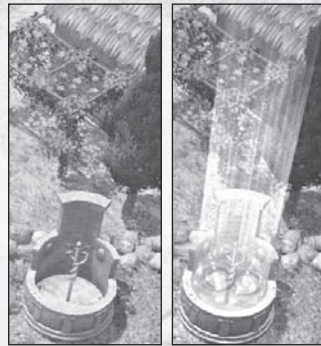
### Tips

- Always carry some health potions.
- To drink potions, use default Quick Slots 9 and 0.
- Increasing your health attribute will give you more life, so you can take more of a beating.
- For maximum protection, cover yourself from head to toe in the best armor, including a shield when possible.



## Dying

Victory is sweet - but in *Titan Quest*, defeat isn't really all that bitter. When you lose all your health, you will die and then find yourself standing at the last Rebirth Fountain you activated. Aside from being set back in your journey, you will lose some amount of experience - however, you will never lose a level once you have earned it. Early in the game, the experience penalty is light. As you reach higher levels, the penalty will become a little more severe.



A Rebirth Fountain is activated the first time you come near it. After that, you can reactivate fountains by left-clicking on them. Not only are Rebirth Fountains where you return after dying, but they are also where you begin when you load a saved game.

Rebirth Fountains are marked on the map for easy spotting. (See p.33 for more on maps.)



## Hero Management

If you want to be truly ready for battle, you will want to spend some time on yourself and your equipment. Most of this preparation will happen on the Character Window.



Character Window  
Hotkey: C or I

### The Things You'll Carry

Material possessions. Things. In *Titan Quest*, you'll win loot from slain foes. You'll gather it from chests deep in ancient tombs. You'll receive rewards for heroic deeds, buy gear from merchants, and possibly trade your items with others in multiplayer mode.

### Know Your Gear

Everything you acquire in *Titan Quest* goes into your inventory. Your primary inventory lies directly below your character portrait, and it is all the storage space you have when you start the game. Once you have an item, you will want to examine it. Simply hover your mouse over an item, and you can learn quite a lot.



Not only the item's name, but the details, bonuses, and requirements are listed here. What's more, if you have an item of that type equipped (and item compare is enabled in the Options Menu), mouse-over will compare the two items. Item comparison also works for the merchant window (p.31).

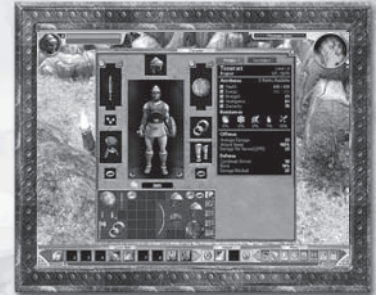
### Equipment Wrangling

To move an item around, left click it to 'pick it up'. The item will move with your mouse. Left click again to place the item, or right click to drop it back where you got it from.

To drop items, place them anywhere over the game world, outside the character window - or simply press the D key.

To wear or wield an item, move it over the image of your character. The equip slot that the item belongs in will turn green. Drop it in the slot. If you were already wearing or wielding an item of that sort, doing this will swap the two items. The new item will be equipped, and you will be holding the old item.

If you try to equip an item, and the slot it goes in turns red, that means that you cannot use it yet. (The item will have a red background in your inventory, as well.) Most items have attribute requirements, such as strength or intelligence (see p.27). You will need to raise that attribute before you can use the item. Other items, especially jewelry, may have level rather than attribute requirements. All requirements are always shown in the mouse-over text for items in your inventory and in shop windows.



*Note: You may also get skills or other magical bonuses that lower requirements.*

- Mouse over items for information.
- Place item on character portrait to equip.
- Place item over game world to drop.
- Arrange your inventory. If you don't have room, you can't pick it up.

To learn more about the types of equipment in *Titan Quest*, see p.35.



## Potions

Health and energy potions have some special features, as items, which you should know about. First, potions come in different sizes. Larger potions will restore larger amounts of health or energy. Potions of the same type and size also stack.



When a stack is full, new health or energy potions of the same type will spill over and start a new stack.

As mentioned above, the first time you pick up a health or energy potion, it is assigned to your Quickbar. Health potions go in slot **9** and energy potions go in slot **0**. (For more on changing this, see p.17).

To drink a potion, use the Quick Slot it's assigned to, or use the dedicated hotkeys: the defaults are **E** for energy potions and **R** for health potions.

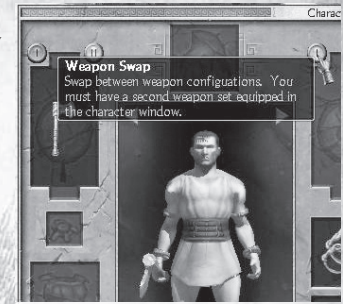


## Expand Your Inventory

At certain points in *Titan Quest*, you will be awarded extra packs, allowing you to store more loot. These extra packs appear to the right of the main inventory box, and are divided as tabs. Only one is shown at a time. Once you have more than a single extra pack, don't forget you have more gear stored in those other packs!

## Enable Weapon Swap

Your hero possesses the ability to carry a second set of weapons at the ready, and switch to them when needed in the thick of battle. For this to work, you must first equip the second set. Swap sets by using the swap button in the Character Window.



The first time you do this, it will look like your weapons have vanished. Don't worry. Those are the second weapon set slots. Fill these slots, and you're good to go. From then on, you can swap weapon sets in game, using the swap button in the game UI (default shortcut key: **W**). Use weapon swapping to alternate between a sword and a bow, or, if you choose the Warfare mastery, between dual wielded blades and a safer, slower mace and shield combo.

*Note: Two things to remember*

1. The weapons you see in the character screen are the same ones you are wielding in game.
2. Your mouse button skill assignment also swaps when you swap weapons.

## Learning and Growing

Every time you defeat an enemy, and in some cases when you complete a quest, you will gain experience points, or XP. When you collect enough XP, you will advance to the next level.

You can see the current level next to your character portrait in the main game window, and beneath your name in the Character Window. Just to the right of that you can see your current experience. The same information is displayed as a green bar at the bottom of the game screen.

Gaining levels allows you to customize and build your hero. You will choose one *Mastery* the first time you level up, and another when you reach level eight. Each *Mastery* is a set of skills that defines you as a certain type of hero.

For each and every level you will earn both skill and attribute points. Skill points are invested in the Skill Window, and attribute points in the primary stats tab of the Character Window.



## Masteries

Each Mastery contains a certain class of skills. Warfare contains skills that will make you a strong melee fighter, whereas the earth mastery is full of spells involving stone and fire. Because you will eventually select two out of eight Masteries, you have the ability to create powerful combinations of skill classes, suited perfectly to the play style of your choice. Skill points can be used on skills and on the Mastery itself. Putting points into a Mastery will:

- Give you multiple attribute bonuses critical to the Mastery, such as life and strength
- Unlock new levels of skills

You must put at least one point in the Mastery to use any skills. As you gain levels, be sure to invest some points in the Mastery to unlock new, more powerful skills and enhancements to key lower level skills.



Skill Window  
Shortcut Key: S

*Note: The Mastery you choose can be changed only before any skill points have been assigned to it. Additionally, skill points invested in Masteries cannot be revoked once confirmed. It is, however, possible to reallocate skill points placed in skills (see p.28).*

## Skills

Putting one skill point into a skill gives you that skill. Putting additional points into it will increase its power and effectiveness in various ways. Skills come in several varieties.

<b>Active</b>	Skills that you must actively use. Attack enemies, heal or buff allies, or summon aid, such as a wolf pet or bolt trap.
<b>Passive</b>	These give you automatic benefits. For instance, they might increase your chance to dodge, or make you more likely to get magical loot.
<b>Weapon Pools</b>	A special class of passive skills is weapon pool attacks. Investing in a weapon pool attack increases the likelihood that you'll execute a deft and deadly attack that will do additional damage.
<b>Energy Reserve</b>	Instead of draining your energy, these skills reserve the top portion of it, so that you cannot regenerate your full store of energy. These skills are usually powerful enhancements or auras. Most remain in effect until you remove them, you quit, or your hero gets killed, although some may eventually wear off.
<b>Modifier</b>	Some advanced skills add to lower level skills. For instance, an enhancement to the Volcanic Orb skill could cause the orb to fracture as it lands, hurting all the enemies in an area.

For energy reserve skills, casting the skill a second time will banish the skill.

Active skills that can be cast on your hero or an ally require a target. Normally, using such a skill will change your mouse cursor into a target. Click on your hero or an ally to use the skill. If the skill is assigned to the left or right mouse button, clicking over a valid target will use the skill automatically on it.

Some skills will have a cool-down time that must elapse before you can use them again. See the combat section (p.17) for more on assigning and using skills.

## Attributes

Your hero has five attributes: Health, Energy, Strength, Intelligence and Dexterity. You can see all of your attributes in the Character Window (default shortcut: C and I).

<b>Health</b>	Amount of damage you take before you die, increases life regeneration
<b>Energy</b>	Consumed when you use skills
<b>Strength</b>	Increases physical damage, required for melee weapons
<b>Intelligence</b>	Increases energy regeneration and all elemental damages, required for magic user items
<b>Dexterity</b>	Increases pierce damage, Offensive Ability (chance to hit or "critical" for extra damage), Defensive Ability (chance to avoid being hit or "criticalled"), and chance to block with shields. Required for hunter and rogue items

As you can see, boosting your attributes can be worth your while. Different Masteries benefit from different attributes. A magic user may want to invest most of their points in energy and intelligence, while a fighter would want strength and dexterity in order to deal the most damage and use the heaviest equipment.



Available attribute points can be assigned by pressing the button next to an attribute. One attribute point will add several points to an attribute. Be cautious when adding these points - placement is final.

Attributes can also be boosted by equipping magical items. A magical item provides no benefit when not equipped.



- First Mastery at level 2, second at level 8
- Level-up grants skill and attribute points - spend both!
- Strength, Intelligence and Dexterity are used for equipment requirements
- Intelligence increases any elemental damage you do - for staffs, spells and magical weapons!

## Pets

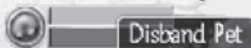
Some skills allow you to summon allies of various kinds to fight beside you. These allies, or pets, are shown underneath your character portrait.



By and large, your pets take care of themselves. They will stay by your side, and attack enemies within sight. You can give your pets orders, however. To do so, hold down the **Ctrl** key and click on your pet. Then click on a destination and the pet will go there. (This key can be changed in Options under Keybindings.)

Any skills you can cast on allies, such as healing spells, can be cast on your pets.

If you find you feel more like being alone, right-click on your pet's portrait for the option to un-summon it. Pets will naturally stay summoned either until their health runs out, or for a fixed amount of time, depending on the pet.



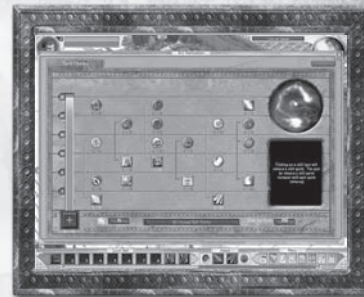
## Skill Reallocation

Only a seer with very special powers can liberate a person from their experience and choices, and change the very substance of who they are. Those in need of such services know them merely as Mystics...

For a price, a Mystic will allow you to unlearn skill points you have assigned, and re-assign them elsewhere. Of course, it will cost you and there are restrictions. You cannot un-choose a Mastery, and you cannot remove points you put into the Mastery.



Talking to a Mystic will bring up this version of the Skill Window:



Each point removed will cost gold - and with each point removed, the cost will rise. Of course adding skill points costs nothing, and can be done at any time through the regular Skill Window.

*Note: You cannot remove the last skill point in a skill if there are points placed in a skill that modifies it.*

## Quests

### Talking

In Titan Quest, as the story unfolds, the people you meet will have things to tell you, favors to ask, and most importantly, urgent tasks that only you can complete. When a non-player character (called an NPC) has something to tell you, they will look like this:



You can talk to an NPC by clicking on him or her. Pay attention: NPCs who want to talk have important things to tell you. The next time you click on them, they may tell you something else. NPCs will generally repeat the most important information, but they might scold you for not listening the first time!

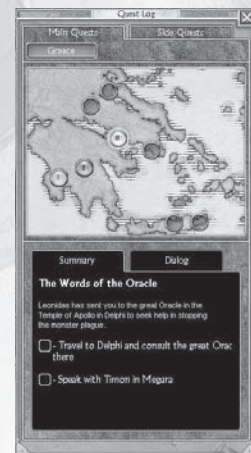
! Has quest information    ♦ Just wants to talk

### The Quest Log

Every adventure you undertake is tracked in the Quest Log. Each chapter of the story is considered a quest, and every major development in a quest is updated in the Main Quest tab. Whenever you are confused about what to do next - consult the Quest Log.

Quest Log  
Shortcut Key: **Q**

Current selected bead - yellow  
Active quest (not yet completed) - orange  
Completed quest - unlit





Every time a quest is added, a glass bead marker is added to the map in the Quest Window. Selecting that marker will show you the information for that quest. The quest objectives, listed with checkboxes at the bottom of the window, will always tell you exactly what needs to be done in the quest. Select the dialog tab for the quest to hear the speech of the person who first assigned it.

You can view any quest you have encountered in the game, whether finished or in-progress.

As with the game maps, the quest log will eventually be divided into the different lands you will travel to. At first the only option will be Greece, but later others will be added. The quest log will always open to your current, active quest.

## Side Quests

In your travels, you will come across many people whom you can speak with. Some of these people will simply talk about what's going on or about their lives. Others will tell you about problems, places, and enemies that you may get involved with, if you want to. These are called side quests, and they are recorded in the Side Quest Tab of your Quest Log.

Each side quest is a small adventure you can pursue. None are required to beat the game, but these optional quests will always involve prizes of some kind or another, be it rare and valuable loot won from a foe, or a reward in thanks for helping someone in need.

Side quests are organized by the location they take place in. Quests that have been completed are checked off. Sometimes you must return to the person who gave you the optional quest, in order to complete it, but not always. Pay attention to which is which, to make sure you get your reward.

## Talking to People

- Only people with talk icons will talk to you
- The icon tells you if their message is for a quest, or if it's just informational
- After you talk to someone, their talk icon will go gray
- If they have new information for you, their icon will light up again
- People have lots to say to you. Try clicking on them more than once



## Following the Story

- Quests are your part in the story
- Read the quest descriptions to understand what's going on
- Read the quest objectives to find out what you have to do next
- Side quests also come with objectives, but you may have to do some thinking and exploring on your own.

## Quest Items

A few items in the game will be necessary for quest purposes only. Quest items look a little different than normal items:



Hold on to your quest items! If you lose a quest item, you can always go back and get it again, but you may have to quit out and re-enter the game first.

*Note: Most quest items cannot be sold or traded.*

## Merchants

All sorts of weapons and armor are for sale at your local merchant's. You can spot a merchant by his market stand, tent, or wagon-cart, and the icon above his head.



There are three basic types of merchant in *Titan Quest*:



### Trader:

a general shop with a standard selection of goods



### Blacksmith:

specializing in items for warfare, rogue, and hunting Masteries



### Arcanist:

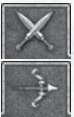


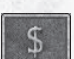
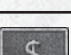
magic users of all types visit these shops

Buying and selling is a straightforward affair. It begins by clicking on a merchant.



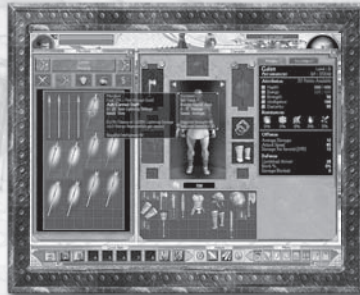
## Buying

The goods a merchant has to sell are divided into categories:

 	<b>Weapons</b>
	<b>Armor</b>
	<b>Potions, rings and pendants</b>
	<b>Sell-back tab. Items you sold to the merchant.</b>

Before you buy anything, hover your mouse over it. The price and item attributes will be displayed above it. If you have a similar item equipped (and item comparison is enabled) a comparison box will appear next to it.

To buy, left click on the item. If you have enough gold, it's yours. If you can't afford it, your mouse cursor will change to show this. You will also be warned if you try to buy something when you have no inventory space.



The stock a merchant carries will not stay the same forever. While the window is open, you can sell back and buy back items for exactly the same price. However, if you step away, costs will change. If enough time goes by, the merchant's entire stock will change over - and the items you sold him will be gone.

## Selling

To sell an item in your inventory, pick it up and drop it into the merchant's window. If quick-sell is enabled, you can also sell by right-clicking on an item.

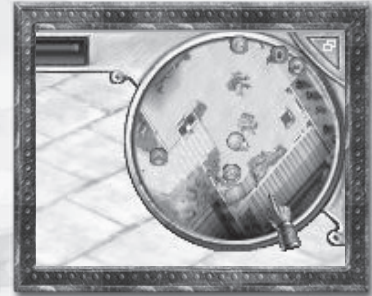
As shown above, all items you sell go into a Sell-back tab. If you change your mind, you can buy them back at the price they were sold for - but make sure you do so before you close the merchant window. After that, their prices go up to market value.

# Maps and Travel

In Titan Quest, you will travel far across the ancient world. No adventurer would set out on such a journey without a good map. Luckily, you have several types of map at your disposal.







## The Compass Map

The first map that you will see is the Compass Map. It sits in the top right corner of your screen, and is excellent for at-a-glance navigation. The Compass Map shows an eagle's-eye view of the terrain. Your current location is displayed just left of the map - useful if you are looking for something in a specific place.



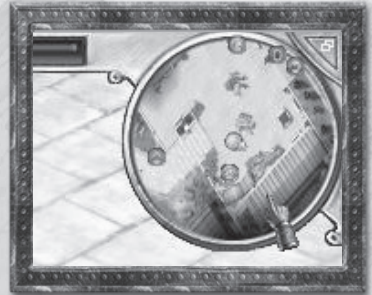
The small button in the top right corner of the map is the map size toggle. This button switches the Compass Map between small, large, and hidden.

You will find several icons on the compass map.

-  Rebirth Fountains
-  Quest items
-  NPCs
-  Merchants
-  Portals
-  Other players in multiplayer

Mouse-over icons for extra info.

In multiplayer games, you will also see party members on the map. Party members who are too far away to be shown are displayed on the map-edge, indicating the direction in which you should travel to find them.





## The Map Window

For more serious navigation, you will want to turn to the Map Window.



Map Window  
Shortcut Key: **M**

The map will look like the compass map with a couple of key differences. Areas you have not yet explored are shown in inky black. As you explore, the map will be revealed. To help you keep track of what you've done most recently, only areas you have explored during the current game session are in color. Places you've been in previous sessions are shown in grayscale.

Controls for the map window are simple

- Use your mouse scrollwheel to zoom in and out
- Click and drag or use the arrow keys to pan
- Center the map with the Center button or **NumKey 0**

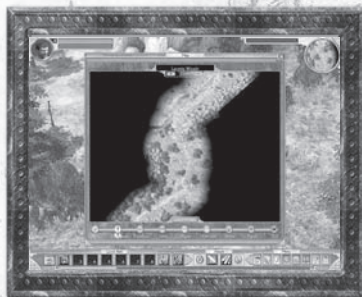
The legend at the bottom of the map contains a list of the icons shown on the map. To find something quickly, click on one of these icons to call out any of its kind shown on the map.

## The Portal System

Naturally, you can get around the world of Titan Quest just fine on foot. However, sometimes you want a faster way to travel. Spread throughout the ancient world, located in just about every city and safe area, are Portals.

When you come near one of these Portals, you will activate it.

When you click on a Portal, you will be presented with a map of the entire land. All the Portals that you have activated in that region will be shown. Simply click on one of them to travel there.



Sometimes, however, you find yourself in a tight spot and you need to get out fast. Luckily, once you have activated a single Portal, you are granted a Portal Stone. It is shown on the main game UI.

By clicking on this button (default shortcut: **L**), you create a small personal portal right where you are. Left click on it to enter the Portal Map Window, choose a destination, and you're there. When you've created one of these portals, it remains until you return to it. If you visit any normal Portal, you will see your Portal Stone has been added as an available destination. When deployed, the Portal Stone icon in the main game interface will change, as a reminder.

In multiplayer games, your party members can travel to your Portal Stone - and vice versa. If you wish to travel with party members, simply open a portal and everyone can meet in one spot. See the section on multiplayer in Titan Quest (p.40) for more information.

### Tips

- Go near a Portal to activate it
- Click on a Portal to use it
- Click on Portal Stone to create a portal wherever you are
- You can travel to the active portals, an open Portal Stone, or party member Portal Stones
- Look for Portal icons on the map in cities and other safe areas

## Equipment

There is a lot of equipment in Titan Quest. You will find exotic swords and spears. You will find magical staves that shoot fire. You will find greaves, helms, rings, robes and bows. Taking all the sorts of average and above-average equipment together, there are thousands items waiting to be won, plundered or bought in Titan Quest.

### The Basics

#### Item Types

Weapons divide into the following categories. Melee weapons, which are weapons you use at close range, come in many varieties: swords, knives, clubs, spears and axes all do different amounts of damage at different speeds. Ranged weapons, on the other hand, divide into bows and staves. Staves fire some type of elemental damage: either fire, ice or lightning.









Armor is divided into pieces. There is armor for the chest, arms, legs and head - as well as shields. Armor is generally divided into armor for warriors and armor for magic users. Magic users will generally wear robes and lighter armor that provide benefits other than mere protection, such as enhanced life or energy regeneration, and movement speed.

Items generally require that you be strong, quick, or smart enough to use them properly. To learn more about attribute requirements for equipment, see (p.24).

### Item Quality

Equipment can be made of several different materials. Since oak is stronger than pine, and iron is stronger than bronze, an oak bow will be better than a pine one, and an iron helm will be better than one made of bronze or copper. Different items are classified differently. For instance, most weapons only come in three material types. Chest armor for fighters can cover more or less of you (breastplate covers more than a corselet), material type (bronze is better than copper), and quality (ornamented is better than embossed).

		
Copper Knife	Bronze Knife	Iron Knife
Good	Better	Best

		
Harness	Breastplate	Suit
Better than nothing	Good	Best

## Superior Gear

### Magical Items

In your adventures, some items you find will have special powers and properties. You can tell right away by their names. A magical sword might be named the Bloodthirsty Short Sword - or the Enfeebling Short Sword of Destruction! When you go to pick one of these up, the text color will be different than a normal item.



A magical item will have one, or sometimes several bonuses.

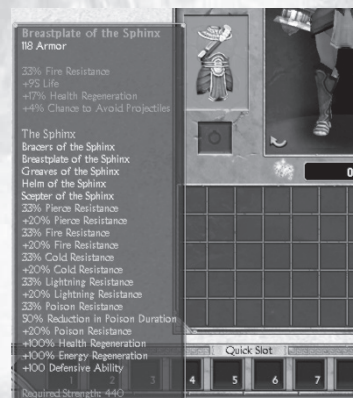
Magical items can make you stronger, swifter, and more deadly. They will also often fetch a higher price on the market.

<b>Standard</b> (white)	Found everywhere. No bonuses.
<b>Magical</b> (yellow)	Imbued with magical properties
<b>Rare</b> (green)	Some Magical items have several powerful bonuses
<b>Epic</b> (blue)	These unique magical items have names, histories, and bestow powerful bonuses on those who use them
<b>Legendary</b> (purple)	Rarer than rare, these unique items have earned fame in the songs and tales of heroes of myth. They are generally superior to any other equipment in the game.

### Item Sets

Some Epic and Legendary items come in sets. Wearing one item from a set is like wearing any other unique item, but when you have a second item from the same set equipped, an extra bonus is added. Each extra item you add increases the bonus. Equipment sets generally consist of two to five items.

Information about sets is always shown on each item.





## Relics and Charms

Over the course of time, possessions of a god or a great hero will come to be imbued with the power of their owner. If you were to find a piece of such a belonging, called a Relic, there are ways to harness that power for yourself by attaching it to your equipment.

Similarly, there certain great beasts, so superior in grace and power among their kind, that even after they perish, some of their greatness lingers. Hunters and nomads claim a piece of such an animal, called a Monster Charm, will act exactly as a Relic does when applied to one's equipment.

Don't look for Relics and Monster Charms among merchants' wares. In Titan Quest, they can only be found or won.



A Relic Shard



A Monster Charm

Attaching a Relic shard or Monster Charm to certain equipment grants a bonus to that equipment. Relic and Charm pieces of the same type can also be combined until a complete Charm or Relic is formed. Each piece you add increases the bonus granted. When a Relic or Charm is completed, it gains extra bonuses above and beyond the standard one.



1 relic piece



partially complete



complete set

The mouse-over text for a Relic or Charm tells you what bonus it will give, what equipment it can be attached to, and how many pieces must be combined to form a whole.

To attach or combine a Relic or Monster Charm, right click on it. You can now apply it to any valid item, which will be highlighted in green when you move over it. To attach or combine, left-click. To cancel and return the Charm or Relic to you inventory, right-click. (You can, of course, move Relics and Monster Charms around your inventory like normal items by left-clicking on them first, instead of right-clicking.)



When you apply a Relic or Monster Charm to an item, the item's inventory image will change.

Once a Relic or Charm is fixed to an item, it can never be removed. If you attach a Relic shard to something and then find another shard of the same type, don't worry. You can add the second piece to the item. The same goes for Monster Charms. Remember, you can only ever combine Relics and Charms of the same type.

### Tips

- Combine Relic and Charm pieces of the same type
- Relics and Charms can only be attached to certain equipment types
- Once attached, Relics and Charms can never be removed
- You can combine a Relic or Charm piece with one already attached to an item (of the same type, only!)

## Difficulty Levels

All good stories come to an end. When your heroic adventures in the world of Titan Quest reach the final chapter and you emerge victorious against all your foes, is it so long, farewell? It doesn't have to be.

When you complete Titan Quest, you unlock a new difficulty level for that character: Epic mode. Your hero, with all the levels, loot and powers you've earned, returns to the dusty Greek road where it all began. Only this time the monsters are harder and the rewards are higher.

And what happens when you defeat Epic? The answer is Legendary mode. Epic is hard, but it will take more than perseverance to beat Legendary mode. To stand a chance in Legendary mode, you'll want to collect at least a few Legendary Items. Legendary Items are high-level unique equipment that begins to appear late in Epic difficulty mode. Even then, you may want to try Legendary mode in the safety of numbers in multiplayer mode.

### Difficulty Levels

Normal Difficulty	The adventure starts here
Epic Difficulty	Harder
Legendary Difficulty	Zeus's bolts that's hard! Bring some Legendary Equipment and some friends!



# Multiplayer

In Titan Quest, playing in multiplayer is as easy as playing in single-player mode. In fact, you may move your hero between single- and multiplayer games whenever you wish. Join up with as many as six other players to adventure, trade, or battle online or over a network.

The world and story of Titan Quest remain the same in multiplayer mode. The only difference is that you face the challenges with your friends fighting at your side.

## Logging On

From the Titan Quest main menu, select Play Titan Quest. Just as in single-player mode, select your character or create a new one. Then choose Join Multiplayer or Host Multiplayer from the play mode menu.

## Hosting

*Note: Hosting a game means that your computer will act as the server. See the Readme file installed with Titan Quest for the machine and bandwidth specifications recommended for optimal performance.*

After selecting Multi Player Host, specify LAN (Local Area Network) or Internet. Once you have made your selection, you will be prompted to enter game details.

### Game Name:

Describe your game or identify yourself. You must enter a game name. All other fields are optional or default.

### Difficulty Level:

Host the game in Normal, Epic, or Legendary modes. You can only choose Epic or Legendary mode if the character you are using has completed the game at the previous difficulty settings (p.39).

### Password:

Only enter a password if you wish to lock your game. Password-protected games are useful when you wish to play only with friends. Make sure they know the password.

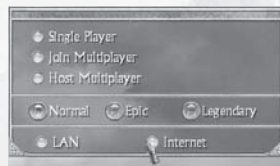
### Max Players:

Limit the number of players. Choosing 1 means that you will be playing alone!

### Level Range:

Set the number of levels above and below your own allowed for players joining the game.

When everything is set as desired, press the Start button to begin.



## Joining

To join a multiplayer game, simply select Join Multiplayer, choose LAN (Local Area Network) or Internet, and press the start button. This will bring you to the Join Window.

The Join Window displays all available games.



- **Game is locked.** You cannot join without a password.
- **Difficulty level.** Normal, Epic or Legendary
- **Map.** Should always say Titan Quest (see below).
- **Ping.** Quality of internet connection. Lower is better.
- **Player names.** Names of people already in the game.
- **Filter.** Type word here to search for specific title. Searches game name and map name only.
- **Filter Full Games.** When checked, will hide games that have no empty slots.

The map name should always be Titan Quest, unless you wish to play a custom, user-created map. You will not be able to join locked games unless you have the password. Also, remember that you can only play normal difficulty level unless your character has already beaten Titan Quest on normal and unlocked higher difficulty levels.

To choose the best game to join, try selecting a game. The right hand side-bar shows extra information about the game selected, including the players, the level range limits, and how long the game has been running.

To find a game based on its title, use the filter feature at the bottom of the screen. The filter box can be used in two ways. Enter text and the filter will search as you type. Or press the **Refresh** button when text is in the filter box to do a quick search from the Gamespy server. This will return a list of games that match your search only. To load the full list of available games afterwards, clear the filter box and press **Refresh** again.

When you have found the game you wish to join, select it by left clicking on it and press the **Start** button.



# Démarrage rapide en français

## Introduction

*ON RACONTE QU'AUTREFOIS*, une grande guerre a opposé les Titans aux Dieux. Cet affrontement a fait trembler la Terre et les Cieux. Les montagnes ont surgi et les océans sont apparus. Les continents se sont scindés en deux. Les Dieux ont fini par dominer leurs ennemis féroces et cruels, les Titans. Quand ils ont pris le contrôle du monde, ils ont réservé une place de choix aux Hommes qui les avaient soutenus pendant la bataille. Les Titans ont quitté la Terre, bannis loin de la lumière du soleil, de la lune ou des étoiles...

*EN GRÈCE ANTIQUE*, dans un petit village, tôt le matin, la rumeur gronde. Cet endroit perdu de la grande civilisation grecque est sur le point de vivre des heures de chaos, de destruction et d'horreur. La légende pleine de couleurs et de fantaisie restitue des éléments presque tombés dans l'oubli. Dans les bois épais, apparaissent des monstres et des bêtes épouvantables qui se déplacent en masse et affluent dans les champs et les huttes du peuple grec. Couvert de poussière et fatigué, un vagabond approche de ce petit village. Cet étranger est voué à devenir leur seul et unique espoir.

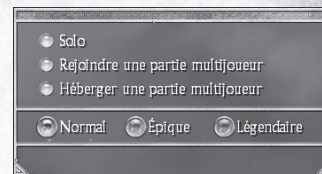
**Bienvenue dans Titan Quest....**

## Démarrage

### Créez votre héros

Bienvenue dans Titan Quest. Une fois le jeu installé et lancé, vous êtes prêt à jouer. Sélectionnez **Jouer à Titan Quest** dans le menu principal. Vous serez invité à créer votre personnage.

À ce stade, vous n'aurez qu'à choisir son nom et son sexe et si vous le désirez, la couleur de sa tunique. Votre aventure dans l'univers de *Titan Quest* définira plus précisément le genre de héros que vous deviendrez.



Au début de votre partie, voici à quoi ressemble votre héros :



Quand votre héros vous satisfait, appuyez sur **Créer**. À l'écran, il ou elle apparaîtra sur un piédestal. Si vous avez saisi plusieurs personnages, les flèches sur le piédestal vous permettront de les faire défiler et d'en choisir un. Désormais, vous êtes prêt à vous lancer dans l'aventure. Appuyez sur **Commencer** et c'est parti!

*Remarque : le nom de votre personnage est celui qui apparaîtra au cours du jeu. Si vous jouez en ligne, les autres joueurs verront votre héros sous ce pseudonyme.*

### Jouer à Titan Quest

Peu de choses sont à savoir pour commencer à jouer. Dans *Titan Quest*, vous incarnez un héros solitaire qui s'aventure dans un monde antique. Lors de votre voyage, vous rencontrerez des grandes figures historiques et mythiques. Toutefois, ce voyage reste uniquement le vôtre. Au début du jeu, votre personnage est novice. Le héros que vous deviendrez et les pouvoirs que vous arriverez à maîtriser dépendront du chemin que vous suivrez dans ce conte épique qu'est *Titan Quest*.



## Le clic-gauche : votre arme suprême !

Toutes les actions nécessaires peuvent être effectuées grâce au bouton gauche de la souris :

- Cliquez avec le bouton gauche de la souris sur le sol et vous vous déplacerez jusqu'à cet endroit.
- Cliquez avec le bouton gauche de la souris sur un monstre et vous l'attaquerez.
- Cliquez avec le bouton gauche de la souris sur le butin et vous le ramasserez.
- Cliquez avec le bouton gauche de la souris sur une porte ou un coffre et vous l'ouvrirez.
- Cliquez avec le bouton gauche de la souris sur une personne (appelée personnage non-joueur ou PNJ) avec une icône au-dessus de la tête et elle vous parlera.

À un moment donné, vous risquez d'avoir tout de même envie d'utiliser le bouton droit de la souris ou le clavier. Sachez cependant que vous pourrez progresser assez loin rien qu'avec des clics-gauches.

## L'évolution cyclique

En voyageant dans l'univers de *Titan Quest*, votre héros débutant se métamorphose en un de ces puissants guerriers destinés à changer le cours de l'histoire. Les prouesses d'un héros le définissent. Dans *Titan Quest*, le héros doit suivre un parcours particulier pour évoluer :

- Combattre des monstres vous apporte *richesse* et *expérience*.
- L'expérience vous permet d'accéder à de nouveaux niveaux. Chaque niveau vous offre la possibilité d'améliorer votre niveau de *maîtrise* et vos *compétences*.
- Des *armes*, une *armure* et des *compétences* améliorées vous rendent plus fort, ce qui vous permet d'affronter des monstres plus puissants.

Et ainsi de suite...

# CONTRAT DE LICENCE UTILISATEUR

Avant d'installer le Logiciel, vous devez prendre connaissance des conditions et termes de la licence d'utilisation qui vous est consentie par la société THQ.

En installant le logiciel, vous reconnaissez avoir pris connaissance de la présente licence et en accepter l'ensemble des conditions. A défaut d'acceptation de ces conditions, toute installation, utilisation et copie du Logiciel est strictement interdite.

## I. DROITS D'AUTEUR ET OCTROI DE LICENCE

### a. droits d'auteur et droits voisins

Les droits d'auteur et droits voisins associés au logiciel, à sa documentation, et à tout autre élément composant le produit fourni par THQ, notamment les titres, thèmes, objets, personnages, noms de personnage, scénario, dialogues, phrases d'accroche, lieux, décors, textes, effets spéciaux, enregistrements audio et séquences d'images, (ci-après dénommés ensemble « Le Logiciel ») sont la propriété de THQ ou de ses fournisseurs.

Le Logiciel est protégé par la législation et les traités internationaux sur les droits d'auteurs et droits voisins et par toutes les législations nationales applicables. Ce Logiciel doit donc être traité comme tout élément protégé par des droits de propriété intellectuelle.

### b. Octroi de licence

THQ vous octroie une licence d'utilisation personnelle, non exclusive, et incessible (la « Licence ») qui vous autorise à installer le logiciel sur un seul disque dur et ce conformément aux restrictions et limitations définies au paragraphe 2 ci-après..

Il ne vous est consenti aucun droit d'utilisation des éléments associés au Logiciel (comprenant notamment les titres, thèmes, objets, personnages, noms de personnage, scénario, dialogues, phrases d'accroche, lieux, décors, textes, effets spéciaux, enregistrements audio et séquences d'images) si ce n'est aux fins d'utilisation normale du Logiciel dans lesquels ces éléments sont inclus et ce dans des conditions conformes aux termes de la présente licence.

Vous n'êtes PAS autorisé à concéder l'utilisation du Logiciel sous licence, ni à vendre, louer ou transférer le Logiciel (ni aucun de ses éléments constitutifs tels que les enregistrements audio ou les échantillons contenus dans ce CD-ROM) à aucun tiers. Vous vous interdisez d'effectuer toute altération, modification ou adaptation de tout ou partie du Logiciel et de sa documentation.

Tous les droits qui ne vous sont pas octroyés expressément dans le cadre de la présente Licence sont des droits réservés de THQ.

## 2. UTILISATION AUTORISEE ET RESTRICTIONS

La présente licence vous autorise à installer et utiliser le Logiciel sur un seul ordinateur et un seul écran à la fois. Vous ne devez donc pas installer le Logiciel sur un ordinateur ou un système donnant un accès électronique à ce logiciel à plus d'UN utilisateur. Vous êtes autorisé à réaliser UNE copie du Logiciel sous forme lisible par la machine, à des fins de sauvegarde uniquement, sachant que ladite copie ne devra être conservée que sur un ordinateur à la fois.

La copie de sauvegarde doit contenir toutes les informations relatives au droit d'auteur et de reproduction contenus dans l'original. Sous réserve des dispositions légales applicables et des conditions de la présente Licence, vous n'êtes pas autorisé à reproduire, décompiler le logiciel, à en recomposer l'ingénierie amont, ni à le désassembler, le modifier, le louer, le prêter ni le distribuer en tout ou partie sur aucun réseau d'aucune sorte. En outre, vous n'êtes pas autorisé à traduire le code-objet du Logiciel en code source sauf dans les conditions strictement définies par la loi. Dans l'hypothèse où vous souhaiteriez obtenir des



informations permettant de mettre en œuvre l'interopérabilité du Logiciel, vous vous engagez à consulter préalablement et avant toute décompilation THQ pour savoir si ces informations ne sont pas facilement et rapidement accessibles. Les droits que vous confère la présente Licence seront résiliés automatiquement, sans préavis de la part de THQ, si vous manquez à l'une quelconque des obligations qui vous incombent au titre de la présente Licence. Vous n'êtes pas autorisé à reproduire la documentation Utilisateur accompagnant le Logiciel. Le Logiciel ne peut être utilisé que sur UN ordinateur.

### 3. LIMITATION DE GARANTIE SUR LOGICIEL

Le Logiciel est fourni « EN L'ETAT » et sans garantie d'aucune sorte : THQ et le(s) concessionnaire(s) de THQ sont (dans le cadre des points 3 et 4, THQ et le(s) concessionnaire(s) de THQ sont dénommés collectivement « THQ ») REJETTENT EXPRESSEMENT TOUTE GARANTIE ET/OU CONDITIONS, EXPRESSE OU IMPLICITE, Y COMPRIS, NOTAMMENT LES GARANTIES ET/OU CONDITIONS IMPLICITES DE BONNE VENTE OU DE QUALITE A L'EMPLOI. THQ NE GARANTIT PAS QUE LES FONCTIONS CONTENUES DANS LE LOGICIEL DE THQ REpondront A VOS EXIGENCES NI QUE LE FONCTIONNEMENT DU LOGICIEL DE THQ NE SERA PAS INTERROMPU NI QU'IL SERA EXEMPT D'ERREURS, NI QUE LES EVENTUELS DEFAUTS SERONT CORRIGES. EN OUTRE, THQ NE DONNE AUCUNE GARANTIE NI NE FAIT AUCUNE DECLARATION CONCERNANT L'UTILISATION OU LES RESULTATS DE L'UTILISATION DU LOGICIEL THQ OU DE SA DOCUMENTATION ET LEUR EXACTITUDE, PRECISION, FIABILITE OU AUTRE CARACTERISTIQUE. AUCUNE INFORMATION NI AUCUN AVIS DONNE ORALEMENT OU PAR ECRIT PAR THQ OU PAR UN REPRESENTANT AUTORISE DE THQ NE CONSTITUERA UNE GARANTIE NI N'ETENDRA EN QUELQUE FACON QUE CE SOIT LE CADRE DE LA PRESENTE GARANTIE. EN CAS DE DEFAILLANCE DU LOGICIEL THQ, VOUS (ET NON THQ NI SON REPRESENTANT AUTORISE) PRENDREZ INTEGRALEMENT A VOTRE CHARGE TOUS LES FRAIS NECESSAIRES AU DEPANNAGE, A LA REPARATION OU A LA CORRECTION DES DEFAUTS, CERTAINES JURIDICTIONS NE PERMETTANT PAS L'EXCLUSION DE GARANTIES, VOUS POUVEZ NE PAS ETRE CONCERNE PAR L'EXCLUSION ENONCEE CI-DESSUS. LES TERMES DE LA PRESENTE EXCLUSION DE GARANTIE SONT SANS PREJUDICE DES DROITS LEGAUX DES CONSOMMATEURS QUI FERONT L'ACQUISITION DE PRODUITS THQ AUTREMENT QUE DANS LE CADRE D'UNE ACTIVITE PROFESSIONNELLE NI NE LIMITENT NI N'EXCLUENT AUCUNE RESPONSABILITE EN CAS DE DECES OU DE DOMMAGE CORPOREL QUI POURRAIT DECOULER D'UNE NEGLIGENCE DE LA PART DE THQ. DANS TOUTE JURIDICTION QUI N'AUTORISE PAS L'EXCLUSION DES GARANTIES ET QUI VOUS AUTORISE A RETOURNER LE PRODUIT DEFECTUEUX, VOUS POUVEZ RETOURNER LE PRODUIT A THQ DANS LES CONDITIONS DEFINIES AU PARAGRAPHE « GARANTIE LIMITEE A 90 JOURS ».

### 4. LIMITATION DE RESPONSABILITE

THQ NE POURRA EN AUCUN CAS, Y COMPRIS EN CAS DE NEGLIGENCE, ETRE TENU POUR RESPONSABLE DE DOMMAGES FORTUITS INDIRECTS, SPECIAUX OU AUTRES QUI POURRAIENT DECOULER DE LA PRESENTE LICENCE OU S'Y RAPPORTER.. CERTAINES JURIDICTIONS N'AUTORISANT PAS LA LIMITATION DE REponsabilite POUR LES DOMMAGES FORTUITS OU INDIRECTS, VOUS POUVEZ NE PAS ETRE CONCERNE PAR LA PRESENTE LIMITATION. Les dommages-intérêts dont THQ pourrait être redevable envers vous ne pourront en aucun cas dépasser le montant du prix d'achat payé pour le Logiciel. Vous vous engagez à charger et à utiliser le Logiciel à vos propres risques et cet engagement libère THQ de toute responsabilité envers vous (sauf en cas de décès ou de dommage corporel qui surviendrait par suite d'une négligence de THQ), notamment pour tout manque à gagner ou perte indirecte qui pourraient découler de votre utilisation du logiciel ou de votre incapacité à l'utiliser ou de toute erreur ou défaillance qu'il pourrait contenir, que celle-ci soit due à une négligence ou à toute autre cause non prévue ici.

### 5. RESILIATION

La licence sera résiliée automatiquement, sans préavis de THQ, si vous manquez aux obligations qui vous incombent au titre de la présente Licence. Dès la résiliation, vous devrez détruire le CD-ROM sur lequel aura été enregistré le Logiciel et devrez retirer définitivement tout élément du Logiciel qui aura pu être chargé sur le disque dur de l'ordinateur dont vous avez le contrôle.

### 6. LOI APPLICABLE

La présente Licence sera régie par la loi de la République française. Dans l'éventualité où un tribunal ayant compétence conclurait à l'inapplicabilité de l'une ou de plusieurs de ses dispositions, le reste de la présente Licence restera entièrement applicable.

### 7. INTEGRALITE DU CONTRAT

La présente Licence constitue l'intégralité du contrat conclu entre les parties concernant l'utilisation du Logiciel. Elle annule et remplace tous les accords antérieurs ou existants concernant son objet. Aucune modification de la présente qui n'aura pas été établie par écrit et signé par THQ n'aura aucune force exécutoire.

Toute pratique qui s'écarterait des dispositions du présent contrat ne pourra valoir renonciation de la part de THQ à demander l'application des dispositions du présent contrat.

THQ et le logo THQ sont des marques commerciales et/ou des marques déposées de THQ Inc. Tous droits réservés.

### GARANTIE LIMITEE A 90 JOURS

Dans toute juridiction qui n'autorise pas l'exclusion des garanties et qui vous autorise à retourner le produit défectueux, THQ France garantit ce disque contre tout défaut durant une période de 90 jours à compter de la date d'achat. Si un défaut de fabrication apparaît pendant cette période de garantie, THQ France remplacera ou réparera gratuitement le disque défectueux sur présentation du justificatif d'achat, du produit et de l'emballage original.

N'oubliez pas de bien mentionner vos nom, adresse complète et numéro de téléphone. Merci de donner une brève description des défauts constatés.

Les disques retournés sans facture ou après expiration de la durée de garantie seront, au choix de THQ France, soit réparés, soit remplacés aux frais du client après acceptation préalable d'un devis.

Cette garantie ne jouera pas si ce disque a été endommagé par négligence, accident, usage abusif ou s'il a été modifié après son acquisition. et plus généralement si le produit a été utilisé dans des conditions non conformes à celles autorisées par la présente licence. La garantie est également exclue dans l'hypothèse où le numéro de série du produit aurait été effacé ou altéré.

Pour faire jouer cette garantie, veuillez expédier le disque avec un double de votre facture d'achat en recommandé et en port payé à :

Service clientèle:

THQ France  
1, rue Saint Georges  
75 009 PARIS



# Nederlandstalige quickstart

## Inleiding

*IN HET BEGIN DER TIJDEN* woedde er een felle strijd tussen de Titanen en de goden. Deze oorlog deed de aarde en de hemelen schudden. Bergen werden geëffend en oceanen gemaakt. Continenten braken in tweeën. Uiteindelijk zegevierden de goden over hun wilde, woeste meesters, de Titanen. En toen zij de heerschappij over de wereld overnamen, begunstigde zij de mensheid, die in de oorlog hun zijde had gekozen. De Titanen waren verdwenen, van de aarde verdreven, ver van het licht van zon of maan of sterren...

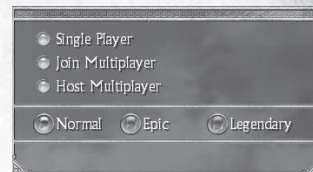
*IN HET OUDE GRIEKENLAND*, in een stil dorpje, vroeg op de dag, is alles ver van vredig. Deze vergeten uithoek van de grote Griekse beschaving staat op het punt te worden gestort in chaos, verwoesting en afgrijzen. Wezens die men nog slechts kende uit de kleurrijke verbeelding van legenden, soms gezien door herders diep in het woud - vreemde, verschrikkelijke monsters en beesten - overspoelen als een verzadigd meer de akkers en hutten van het Griekse volk. Stoffig en vermoeid bereikt een zwerver dit dorpje - een vreemdeling, door het lot aangewezen als hun enige, stralende baken van hoop.

**Welkom bij Titan Quest....**

## Het spel starten

### Je held creëren

Welkom bij Titan Quest. Als het spel is geïnstalleerd en gestart, kun je beginnen. Selecteer **Play Titan Quest** (Titan Quest spelen) in het hoofdmenu. Je wordt gevraagd een nieuw personage te creëren.



Op dit moment kies je alleen een naam en het geslacht, en als je wilt, de kleur van je tunica. Wat voor een held je wordt, bepaalt je reis door de wereld van Titan Quest.



*Aan het begin van het spel ziet je held er zo uit:*



Klik op de knop **Create** (creëren) als je tevreden bent met je held. Hij of zij verschijnt op het voetstuk op het scherm. Als je meerdere helden hebt opgeslagen, rouleert de pijl op het voetstuk tussen hen in. Maar voorlopig kun je aan de slag. Klik op **Start** en je bent op weg!

*Opmerking: de naam van je personage bepaalt het imago van je held in het spel. Als je online speelt, is dit de naam die de andere spelers van je te zien krijgen.*

### Titan Quest spelen

Je hoeft maar een paar dingen te weten om aan de slag te gaan. In *Titan Quest* trek je als eenzame held op avontuur door de oude wereld. Op je omzwervingen ontmoet je andere grote helden uit de geschiedenis en mythen, maar de reis wordt door jou bepaald. Als het spel begint, is je personage een onbeschreven blad. Wat voor een held je wordt en welke krachten je gaat bezitten, wordt door jou bepaald in de loop van het onsterfelijke verhaal van *Titan Quest*.



## De linker muisknop - je grootste wapen

Alles wat je moet doen kan met de linker muisknop:

- Klik op de grond en je gaat daarheen.
- Klik op een monster en je valt het aan.
- Klik op een buit en je pakt hem op.
- Klik op een deur of een kist en hij gaat open.
- Klik op een persoon (een zogenaamd niet-speelbaar personage) met een pictogram boven het hoofd en je kunt met hem of haar praten.

Uiteindelijk ga je ook de rechter muisknop gebruiken en zelfs het toetsenbord, maar met de linker muisknop kom je al een heel eind.

## De kringloop van de pret

Terwijl je held door de landen van Titan Quest trekt, ontwikkelt deze zich van een primitieve beginnening tot de machtigste der krijgers \_ voorbestemd om de geschiedenis een wending te geven. Een held wordt gevormd door zijn of haar daden. In Titan Quest word je zo'n held als volgt:

- Met vechten tegen monsters krijg je buit en ervaring.
- Met ervaring stijgt je naar hogere niveaus. Op elk niveau leer en oefen je nieuwe vaardigheden.
- Met verbeterde wapens, harnas en vaardigheden word je sterker en kun je vechten tegen grotere monsters.

Leef de legende...

# Gebruiksrechtovereenkomst

Door het bestand te gebruiken geeft u aan dat u instemt om gebonden te zijn aan de bepalingen.

**1. EIGENDOM.** De Software is en zal het eigendom blijven van THQ en zijn leveranciers. THQ en zijn leveranciers zullen eigenaar blijven van alle patenten, auteursrechten, handelsmerken, handelsnamen, handelsgeheimen en andere eigendomsrechten die betrekking hebben op of aanwezig zijn in de Software. Behalve zoals is voorzien in paragraaf 2, beschikt u over geen rechten op titels van of belangen in de Software. De Software is niet aan u verkocht maar u gebruikt deze in licentie onder de bepalingen van deze overeenkomst. Als u instemt met alle bepalingen van deze overeenkomst, bezit u slechts de media waarop de Software is verschaft en niet de Software zelf.

**2. LICENTIEVERLENING.** THQ verleent u een niet-exclusief, niet-overdraagbaar recht om één exemplaar van de Software te gebruiken in het land waar u deze hebt aangeschaft voor uw eigen persoonlijk gebruik. Alle overige rechten zijn expliciet gereserveerd door THQ. U bent niet gerechtigd: (a) de Software op meerdere computers te installeren, de Software te delen via een timeshare of deze beschikbaar te maken voor meerdere personen, (b) de Software te reverse-engineeren of decompileren, of (c) de Software te exporteren. U mag één kopie maken van de Software, uitsluitend met als doel het maken van een reservekopie, vooropgesteld dat u alle auteursrechtkenmerken en overige vertrouwelijke of eigendomsgegevens die op het oorspronkelijke exemplaar staan, op deze kopie reproduceert. U erkent dat THQ of zijn leveranciers de Software te allen tijde mogen bijwerken en dat daaraan geen verplichtingen kunnen worden ontleend voor de verstrekking van updates, louter door uw instemming met deze overeenkomst.

**3. BEPERKTE GARANTIE.** THQ (UK) LIMITED garandeert de oorspronkelijke koper van dit THQ (UK) LIMITED-product dat het medium waarop het computerprogramma is opgenomen vrij is van gebreken aan materialen en uitvoering gedurende een periode van negentig (90) dagen na aankoopdatum. Deze THQ (UK) LIMITED-software wordt verkocht „in de huidige staat“, zonder uitdrukkelijke of geïmpliceerde garantie in enige vorm, als gevolg van het gebruik van dit programma. THQ (UK) LIMITED stemt ermee in om gedurende een periode van negentig (90) dagen een THQ (UK) LIMITED-product naar eigen goeddunken kosteloos te repareren of te vervangen, zonder portokosten met als uitgangspunt het aankoopbewijs, via de customer service in Engeland. Kosteloze vervanging van de Game Disc voor de oorspronkelijke koper vormt onze maximale aansprakelijkheid. Verzendend naar THQ (UK) LIMITED, Ground Floor; Block A, Dukes Court, Duke Street, Woking, Surrey, GU21 5BH, Verenigd Koninkrijk. Reken op 28 dagen na verzending voordat wij uw Game Disc retourneren. Deze garantie geldt niet voor normale slijtage. Deze garantie is niet van toepassing en ongeldig indien het gebrek in het THQ (UK) LIMITED-product het gevolg is van misbruik, onredelijk gebruik, verkeerd gebruik of nalatigheid. DEZE GARANTIE VERVANGT ALLE OVERIGE GARANTIES EN GEEN ANDERSSOORTIGE REPRESENTATIES OF CLAIMS ZULLEN BINDEND ZIJN, OF THQ (UK) LIMITED TOT IETS VERPLICHTEN. ELKE GEÏMPliceERDE GARANTIE OF GESCHIKTHEID VAN DIT SOFTWAREPRODUCT, INCLUSIEF GARANTIES MET BETREKKING TOT DE VERKOOPBAARHEID EN GESCHIKTHEID VOOR EEN BEPAALD DOEL, ZIJN BEPERKT TOT DE EERDER VERMELDE PERIODE VAN NEGENTIG (90) DAGEN. IN GEEN GEVAL ZAL THQ (UK) LIMITED AANSprakELIJk ZIJN VOOR ENIGE SPECIALE, INCIDENTELE OF GEVOLGSCHADE, NAAR AANLEIDING VAN HET BEZIT, GEBRUIK OF HET NIET FUNCTIONEREN VAN DIT THQ (UK) LIMITED-PRODUCT. UW CONSUMENTENRECHTEN ZIJN NIET IN HET GEDING. Dit computerprogramma en de verwante documentatie en materialen worden beschermd door zowel nationale als internationale auteursrechtwetgevingen. Opslag in een database-systeem, reproductie, vertaling, verhuur, uitleening, uitzending en openbaarmaking zijn verboden zonder de uitdrukkelijke schriftelijke toestemming van THQ (UK) LIMITED.

**4. BEPERKING VAN AANSprakELIJkHEID.** IN GEEN GEVAL ZAL THQ MEER AANSprakELIJkHEID BEKENNEN MET BETREKKING TOT DEZE OVEREENKOMST EN DE SOFTWARE, ONGEACHT DE VORM VAN DE ACTIE WAARMEE DEZE AANSprakELIJkHEID IN HET GEDING IS GEKOMEN (OP BASIS VAN WANPRESTATIE, ONRECHTMATIGE DAAD OF ANDERSZINS), OF ZAL DEZE HOGER LIGGEN DAN HET LICENTIEBEDRAG DAT IS ONTVANGEN DOOR THQ VOOR DE SOFTWARE. GEEN THQ-LEVERANCIER ZAL AANSprakELIJkHEID ZIJN ONDER DEZE OVEREENKOMST. IN GEEN GEVAL ZULLEN THQ OF LEVERANCIERS VAN THQ AANSprakELIJk ZIJN VOOR ENIGE DIRECTE OF INDIRECTE, UITZONDERLIJKE, SPECIALE OF GEVOLG- OF INCIDENTELE SCHADE IN WELKE VORM DAN OOK (INCLUSIEF EN ZONDER BEPERKING GEDORVEN WINST) ZELFS INDIEN THQ OF DE LEVERANCIER OP DE HOOGTE IS GESTELD VAN DE MOGELIJKHEID VAN ZULKE SCHADE. IN SOMMIGE RECHTSGBIEDEN IS DE BEPERKING OF UITSLUITING VAN AANSprakELIJkHEID VOOR GEVOLG- OF INCIDENTELE SCHADE NIET TOEGESTAAN, ZODAT DE BOVENSTAANDE BEPERKING MOGELIJK NIET VAN TOEPASSING IS. THQ IS NIET AANSprakELIJk VOOR CLAIMS VAN DERDEN MET BETREKKING TOT DE SOFTWARE. DE BEPERKTE GARANTIE, BEPERKTE VERGOEDINGEN EN BEPERKTE AANSprakELIJkHEIDSVORZIENINGEN IN DEZE OVEREENKOMST VORMEN EEN FUNDAMENTEEL ONDERDEEL VAN DE BASIS VAN DE ONDERSTAANDE AANBIEDING, EN THQ IS NIET IN STAAT OM DE SOFTWARE TE VERSCHAFFEN ZONDER DEZE BEPERKINGEN. IN SOMMIGE RECHTSGBIEDEN IS DE BEPERKING OF UITSLUITING VAN AANSprakELIJkHEID NIET TOEGESTAAN, ZODAT DE BOVENSTAANDE DISCLAIMER MOGELIJK NIET VAN TOEPASSING IS. IN DAT GEVAL IS DE DUUR VAN ENIGE BEPERKING OF UITSLUITING VAN AANSprakELIJkHEID BEPERKT TOT NEGENTIG (90) DAGEN NA ONTVANGST VAN DE SOFTWARE. DEZE GARANTIE GEEFT U BEPAALDE WETTELIJKE RECHTEN. U BESCHIKT MOGELIJK OOK OVER ANDERE WETTELIJKE RECHTEN DIE VAN RECHTSGBIED TOT RECHTSGBIED KUNNEN VERSCHILLEN.

**5. BEÏNDIGING.** U kunt deze Overeenkomst te allen tijde beëindigen. Deze overeenkomst wordt automatisch beëindigd indien u in strijd handelt met een van de bepalingen van deze overeenkomst. Na beëindiging dient u de software en de reservekopie die eventueel conform de Overeenkomst is gemaakt, te vernietigen.

THQ (UK) Limited, Ground Floor, Block A, Dukes Court, Duke Street  
Woking, Surrey, GU21 5BH, Verenigd Koninkrijk



# Game Credits

## Iron Lore Entertainment

**Lead Designer, Executive Producer**  
Brian Sullivan

**Producer, General Manager**  
Jeff Goodwill

**Director of Technology**  
Paul Chieffo

**Art Director**  
Michael Sheidow

**Associate Producer, Audio Director**  
Michael Verrette

**Lead Gameplay Designer**  
Arthur Bruno

**Lead Content Designer**  
Tom Potter

**Lead Engine Programmer**  
Max McGuire

**Lead Game Programmer**  
Bryn Bennett

**Design**  
Morgan Brown  
Ian Frazier  
Shawn Frison  
Joshua Glavine  
Nathanael Jacques  
Benjamin Schneider

**Programming**  
Chris Duguay  
Marcus Hays  
Brandon LaCava  
Karl Whinnie

Aaron Horne  
Stephan Sherman

**Art**  
Rich Sullivan - Senior Concept  
Brian Labore - Senior Animation  
Brian Jones - Senior Character  
Steve Canniff  
Travis Doggett  
Heidi Mann  
Josh McHugh  
Eric Miller  
Joe Mirabello  
Brian Parnell  
Joshua Singh  
Michael Tarwater

**Audio**  
Scott Morton - Composer &  
Sound Designer

**Q/A**  
David Kondor - Design  
Implementation

Justin Lakin  
Chris McCarthy

**Professional & Administration**  
Beth Duguay - Controller

**Business**  
Bob Wallace - Chief Strategy Officer

**Legal**  
Mark Stevens  
Jennifer Stanley

**Additional Programming**  
Morgan McGuire - Software Design  
Consultant

**Demiurge Studios**  
Al Reed  
Dan Chretien  
Andy Hendrickson  
Kurt Reiner

**Additional Support**  
Dara-Lynn Pelechatch - Recruiting  
Cory Robinson - Art  
Tim Scott - QA

**Special Thanks**  
Wendy Chieffo  
Ritsuko Sullivan

## THQ Inc.

### Product Development

**Senior Vice President,  
Product Development**  
Steve Dauterman

**Director, Product Development**  
Richard Browne

**Project Manager**  
Jason Garwood

**Creative Manager**  
Michael Fitch

**Project Co-ordinator**  
Galen Paolini

## Quality Assurance

**Director, Quality Assurance**  
Monica Vallejo

**QA Managers**  
Mario Waibel  
Michael Motoda

**Test Supervisor**  
Nickolas Gardner

**Test Leads**  
Stephen Florida  
Carlos Restrepo

**Testers**  
Ali Zandi  
Ali Taher  
Brett Cowan  
Ruben Gonzalez  
Marc Henner  
Ian Berg  
Scott Allman  
Scott Rinehart  
Paul Barfield  
John Naumann  
Justin Lord  
Michael Hernandez  
Scott Eades  
Brittany Riffe  
Jamie Stone  
Andrew Herman  
Carlos Aguilar  
Stephen Kitchens  
Jon Michael Bunch  
Jason Danell  
Chris Emerson  
Kirti Pillai  
Steven Malloy  
Aaron Bernardo  
Lisa Ries  
Shannon Turok  
Steve Gonzalez  
Herb Rand  
Paul Kimble

**PC Supervisor**  
Jim Krenz

**QA Technicians**  
Richard Jones  
David Wilson

**Mastering Lab Technicians**  
Charles Batarse  
Glen Peters  
Anthony Dunnet  
T. Ryan Arnold

**Database Applications Engineers**  
Jason Roberts  
Brian Kincaid

**Game Evaluation Team**  
Sean Heffron  
Scott Frazier  
Matt Elzie

## Marketing

**Executive Vice President,  
Worldwide Publishing**  
Kelly Flock

**Director, Global Brand Management**  
Kevin Kraff

**Brand Manager**  
Lin Leng

**Director, Corporate Communications**  
Liz Pieri

**Global Media Relations Manager**  
Tom Stratton

**Account Executive, GCI Group**  
Andrew Wong

## THQ International

**SVP European Publishing**  
Ian Curran

**Director, Global Brand  
Management**  
Michael Pattison

**Senior Global Brand Manager**  
Mickey Torode

**Assistant Global Brand Manager**  
Anthony Newall

**Online Manager**  
Huw Beynon

**UK Marketing Manager**  
Jon Rooke

**UK Senior PR Manager**  
Sam Forrest

**Export Marketing Manager**  
Gayle Shepherd

**Product Manager, Germany**  
Melanie Skrok

**Head of PR, Germany**  
Georg Reckenthäler

**Marketing Manager, Nordic**  
Henrik Viby



**PR Manager, Nordic**  
Peter Jakobsen

**Senior Product Manager, France**  
Jeremy Goldstein

**PR Manager, France**  
Jerome Benzadon

**Product Manager, Spain**  
Javier Manu

**PR Manager, Spain**  
Jorge Nicolas Vazquez

**Marketing and PR Manager, Benelux**  
Robin Wolff

**Product Manager, Asia Pacific**  
Jon Rowe

**PR & Promotions Co-ordinator, Asia Pacific**  
Drew Taylor

**International Art Director**  
Till Enzmann

**DTP Operator (ICS)**  
Anja Johnen  
Detlef Tapper  
Dirk Offenberg  
Jens Spangenberg  
Jörg Stauvermann  
Ramona Sackers  
Ramona Stell

## Localisation

**European Localisation Director**  
Susanne Dieck

**European Localisation Engineer**  
Bernd Kurtz

**Localisation Co-ordinator**  
Andreas Herbertz

**Localisation Assistant**  
Patrick Fedtke

**German Translations**  
Jörg Gräfingholt

**French, Italian, Spanish Translations**  
Binari Sonori S.r.l.

## Creative Services

**Director of Creative Services**  
Howard Liebeskind

**Creative Services Manager**  
Kirk Somdal

**Video Production Manager**  
Christopher Folino

**Video Production Co-ordinator**  
Melissa Rivas

**Packaging Design**  
Ayzenberg Group

**Special Thanks**  
Brian Farrell  
Jack Sorensen  
Dan Kelly  
Tim Campbell  
Germaine Gioia  
Brandy Carrillo  
Deborah Fingerma  
Jenni Carlson

## Wheelhouse Entertainment

**Writer**  
Randall Wallace

**Story Consultant/Editor**  
Danielle Lemmon

**Story Consultant/Editor**  
Stephen Zapotoczny

**Story Consultants**  
Kevin Gogle  
Jill Rytie  
Jason Tracey

## Voice Over Credits

**Dialog Recording & Editing**  
Atlantis Group

**Recording Engineer**  
John Chominsky

**Dialog Editor**  
Jaimie Siedow

**Dialog Casting and Direction**  
Voice Works Productions

**VO Director**  
Douglas Carrigan

**Voice Actors**  
Carlos Alazraqui  
Jack Angel  
Michael Beattie  
Susanne Blakeslee  
Steve Blum  
S. Scott Bullock  
Kat Cressida  
Barry Dennen  
Robin Atkin Downes  
Keith Ferguson  
Crispin Freeman  
Kim Mai Guest  
Zach Hanks  
Phillip Maurice Hayes  
Erv Immerman  
Bob Joles  
Susan Boyd Joyce

Daryl Kurylo  
Nolan North  
Jentle Phoenix  
Dwight Schultz  
Andre Sogliuzzo  
Stephen Stanton  
Amir Talai  
Fred Tatasciore  
Jim Ward  
Dave Wittenburg  
Gwendoline Yeo

**Vocalist**  
Tautia Soderquist

**Opening Cinematic**  
Blur Studios

## SOFTWARE

Agent movement 'powered by PathEngine™'  
[www.pathengine.com](http://www.pathengine.com)



This product contains software technology licensed from GameSpy



Industries, Inc. ©1999-2005 GameSpy Industries, Inc. All rights reserved.

Uses Bink Video. Bink Video. ©1997-2006 by RAD Game Tools, Inc.

This product includes cryptographic software written by Eric Young (eay@cryptsoft.com) ©1995-1998 Eric Young (eay@cryptsoft.com). All rights reserved.

This product includes software developed by the OpenSSL Project for use in the OpenSSL Toolkit. (<http://www.openssl.org/>) ©1998-2004 The OpenSSL Project. All rights reserved.

This product includes software from the G3D Project (<http://g3d-cpp.sf.net>). ©2000-2006, Morgan McGuire. All rights reserved.



© 2006 THQ Inc. Developed by Iron Lore Entertainment. IRON LORE ENTERTAINMENT and the IRON LORE LOGO are either registered trademarks or trademarks of Iron Lore Entertainment, Ltd. in the United States and/or other countries, used under license. This product contains software technology licensed from GameSpy Industries, Inc. © 1999-2005 GameSpy Industries, Inc. All rights reserved. The NVIDIA logo and "The way it's meant to be played" logo are registered trademarks or trademarks of NVIDIA Corporation. Uses Miles Sound System. Copyright © 1991-2005 by RAD Game Tools, Inc. Uses Bink Video. Copyright © 1997-2006 by RAD Game Tools, Inc. THQ, Titan Quest and their respective logos are trademarks and/or registered trademarks of THQ Inc. All rights reserved. All other trademarks, logos and copyrights are property of their respective owners.



## THQ CUSTOMER SERVICES

### AUSTRALIA

Technical Support and Games Hotline  
1902 222448  
Call costs \$2.48 (incl GST) per minute  
Higher from mobile/public phones

### DANMARK

eursupport@thq.com

### DEUTSCHLAND

Tel. 09001 505511  
(€ 0,99/Min. aus dem Festnetz der DTAG)  
für **spielinhaltliche** Fragen  
Mo.-Sa. von 11.00–21.00 Uhr

Tel. 01805 605511  
(€ 0,12/Min. aus dem Festnetz der DTAG)  
für **technische** Fragen  
Mo.-Sa. von 11.00–21.00 Uhr

Internet: <http://www.thq.de/support>  
(Online-Formular für schriftliche Anfragen)

### ESPAÑA

Correo: THQ Interactive Entertainment España S.L.U.,  
Avenida de Europa 19, Edificio I 1º B,  
Pozuelo de Alarcón, 28224 Madrid, ESPAÑA  
Tlf. 91799 1990 (De Lunes a Viernes de 10.00 a 13.30 horas  
y de 16.00 a 18.00 horas)

El precio de la llamada es el precio de una llamada convencional sujeto a los precios establecidos por cada compañía telefónica.

### FRANCE

Assistance technique : 08 25 06 90 51 du lundi au samedi  
de 10 à 12 h et de 14 h à 20 h (0,34 € la minute)  
[thq@euro-interactive.fr](mailto:thq@euro-interactive.fr)

### ITALIA

È inoltre possibile accedere al nostro  
Servizio Assistenza Tecnica  
on-line compilando un semplice form:  
<http://www.halifax.it/assistenza.htm>

Tel. 024 130345  
(Dal lunedì al venerdì, dalle ore 14 alle ore 19)

E-mail: [assistenza@halifax.it](mailto:assistenza@halifax.it)

Tariffa valida per chi chiama da Milano, interurbana per chiamare provenienti da altri distretti

### NEDERLAND

Als je technische problemen met dit spel ondervindt,  
kun je contact opnemen met de technische helpdesk  
in Groot-Brittannië:

Telefoon +44 87 06080047  
(nationale/internationale telefoonnummers  
zijn van toepassing)

ma t/m vr 8.00 tot 19.00 (GMT)  
za 9.00 tot 17.00 (GMT)

### NORGE

eursupport@thq.com

### ÖSTERREICH

Tel. +49 1805 705511 (Die Kosten entsprechen einem  
Auslandsgespräch nach Deutschland)  
für **spielinhaltliche** Fragen  
Mo.-Sa. von 11.00–21.00 Uhr

Tel. +49 1805 605511 (Die Kosten entsprechen einem  
Auslandsgespräch nach Deutschland)  
für **technische** Fragen  
Mo.-Sa. von 11.00–21.00 Uhr

Internet: <http://www.thq.de/support>  
(Online-Formular für schriftliche Anfragen)

### PORTUGAL

Informações de Jogos, Truques e Dicas, liga: 256 836 273  
(Número sujeito ao tarifário normal da Portugal Telecom)  
[apoioaoconsumidor@ecofilmes.pt](mailto:apoioaoconsumidor@ecofilmes.pt)  
HORÁRIO DE FUNCIONAMENTO das 17.00h às 19.00h  
Todos os dias úteis

SERVIÇO DE ASSISTÊNCIA TÉCNICA  
Liga: 707 236 200  
HORÁRIO DE FUNCIONAMENTO das 14.00h às 17.30h  
Todos os dias úteis. Número Único Nacional: € 0,11 por minuto

### SUISSE/SCHWEIZ/SVIZZERA

Tel. +49 1805 705511 (Die Kosten entsprechen einem  
Auslandsgespräch nach Deutschland)  
für **spielinhaltliche** Fragen  
Mo.-Sa. von 11.00–21.00 Uhr

Tel. +49 1805 605511 (Die Kosten entsprechen einem  
Auslandsgespräch nach Deutschland)  
für **technische** Fragen  
Mo.-Sa. von 11.00–21.00 Uhr

Internet: <http://www.thq.de/support>  
(Online-Formular für schriftliche Anfragen)

### SUOMI

eursupport@thq.com

### SVERIGE

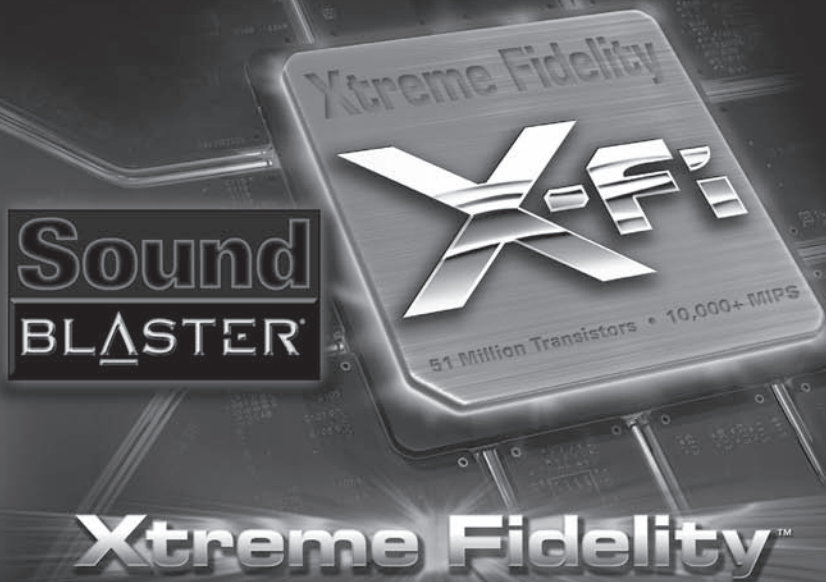
eursupport@thq.com

### UK

Telephone: +44 (0)87 06080047  
(national/international call rates apply)  
(Mon-Fri 8.00 am to 7.00 pm, Sat 9.00 pm to 5.00 pm)

Online:  
Register your game at [www.thq.co.uk](http://www.thq.co.uk)  
for FAQs and full online support

# You with Sound Blaster X-Fi™ Them with Motherboard Audio Them ... **PWNED!**



Motherboard audio just doesn't measure up. Sound Blaster X-Fi™ delivers the power of an advanced CPU dedicated solely to audio, providing up to 40%\* more frames per second while immersing you in a sphere of sound with 9 virtual speakers over standard stereo headphones.

Upgrade your PC audio to Sound Blaster X-Fi for the most thrilling gaming audio ever!

## Hear to Believe

[www.soundblaster.com](http://www.soundblaster.com)

CREATIVE

©2006 Creative Technology Ltd. All other brands are trademarks or registered trademarks of their respective holders.

\* Based on performance testing in Battlefield 2



# Quick Reference Default Key Settings

General	
1-9, 0	Skill Quickbar Slots
R	Health Potion
E	Energy Potion
W	Weapon Swap
L	Use Portal Stone
C, I	Character Window
Q	Quest Window
S	Skill Window
M	Map Window
G	Game Menu
H, F1	Tutorial Help
Spacebar	Pause
Up Arrow	Next Skill
Down Arrow	Previous Skill
Ctrl	Target Pet (hold key and click)
Items	
Alt	Show Items (no broken)
Z	Show Items on Ground
X	Show Items (no common)
D	Drop Item (must be selected)
View	
Mousewheel	Zoom In and Out
NumKey 1	Max Zoom In
NumKey 2	Default Zoom
NumKey 3	Max Zoom Out
NumKey 0	Center (Map Window)
Multiplayer	
P	Party Window
T	Chat ("Talk") Window

**Titan Quest Install Code**

Don't Lose This Number! This DVD key is required to fully use this product!

